

The logo for 'CASCATA' features the word in a dark grey, sans-serif font. A teal-colored swoosh underline starts under the 'C', passes through the 'S', and ends under the 'A'. Below the main text, the words 'BY LENNAR' are written in a smaller, teal, spaced-out sans-serif font.

CASCATA  
BY LENNAR

ESTATE COLLECTION



# CASCATA

AT MIRALAGO BY LENNAR

## ALMERA ESTATE COLLECTION



ELEVATION A - STANDARD



ELEVATION B - STANDARD



ELEVATION A1 - OPTIONAL STONE



ELEVATION B1 - OPTIONAL STONE

1 Story | 3 Bedrooms | 2.5 Baths | Family Room | Breakfast Area | Covered Terrace | 2-Car Garage



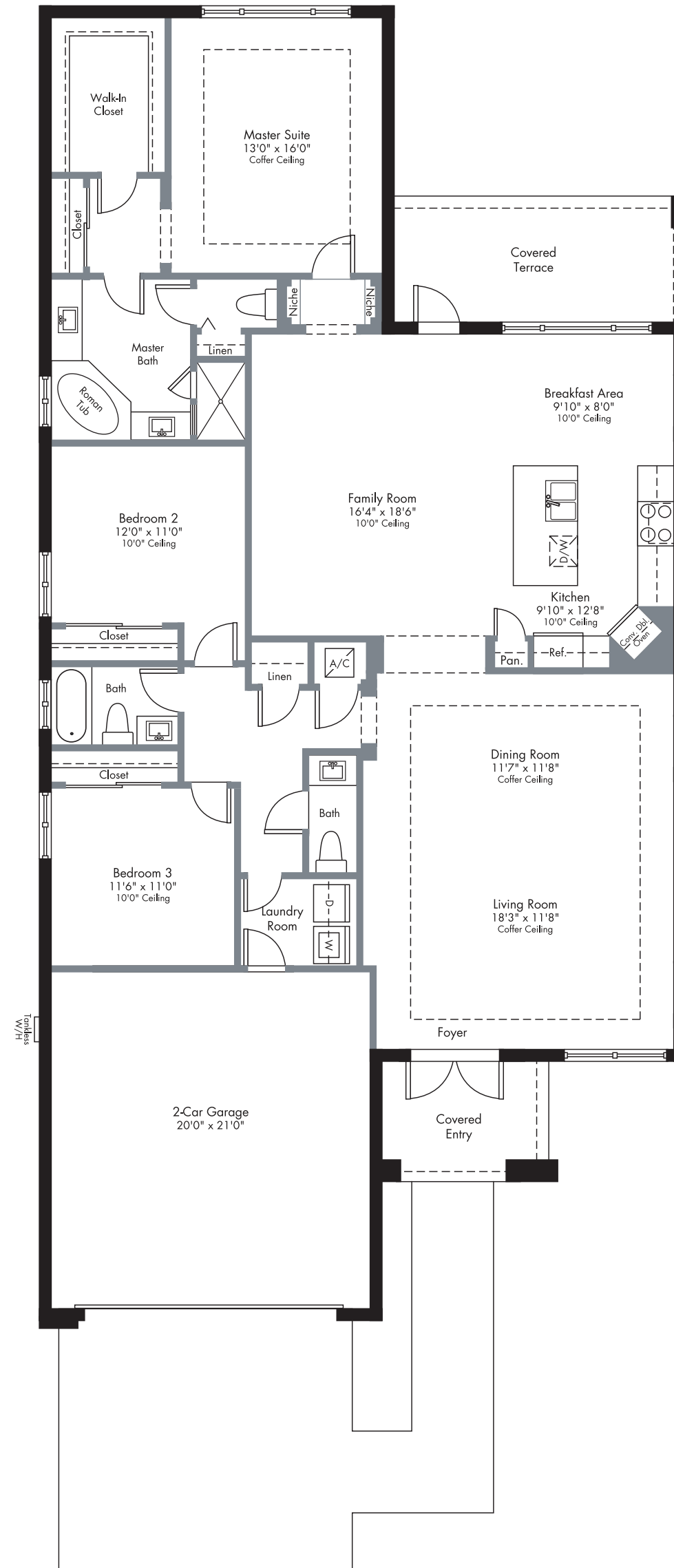
# CASCATA

AT MIRALAGO BY LENNAR

## ALMERA

ESTATE COLLECTION

1 Story | 3 Bedrooms | 2.5 Baths | Family Room | Breakfast Area | Covered Terrace | 2-Car Garage



2,151 Sq. Ft.	A/C Area
459 Sq. Ft.	2-Car Garage
87 Sq. Ft.	Covered Entry
145 Sq. Ft.	Covered Terrace
2,842 Sq. Ft.	Total

LENNAR





# CASCATA

AT MIRALAGO BY LENNAR

## BONITA

ESTATE COLLECTION



ELEVATION A - STANDARD



ELEVATION B - STANDARD



ELEVATION A1 - OPTIONAL STONE



ELEVATION B1 - OPTIONAL STONE

1 Story | 4 Bedrooms | 3 Baths | Family Room | Breakfast Area | Covered Terrace | 2-Car Garage



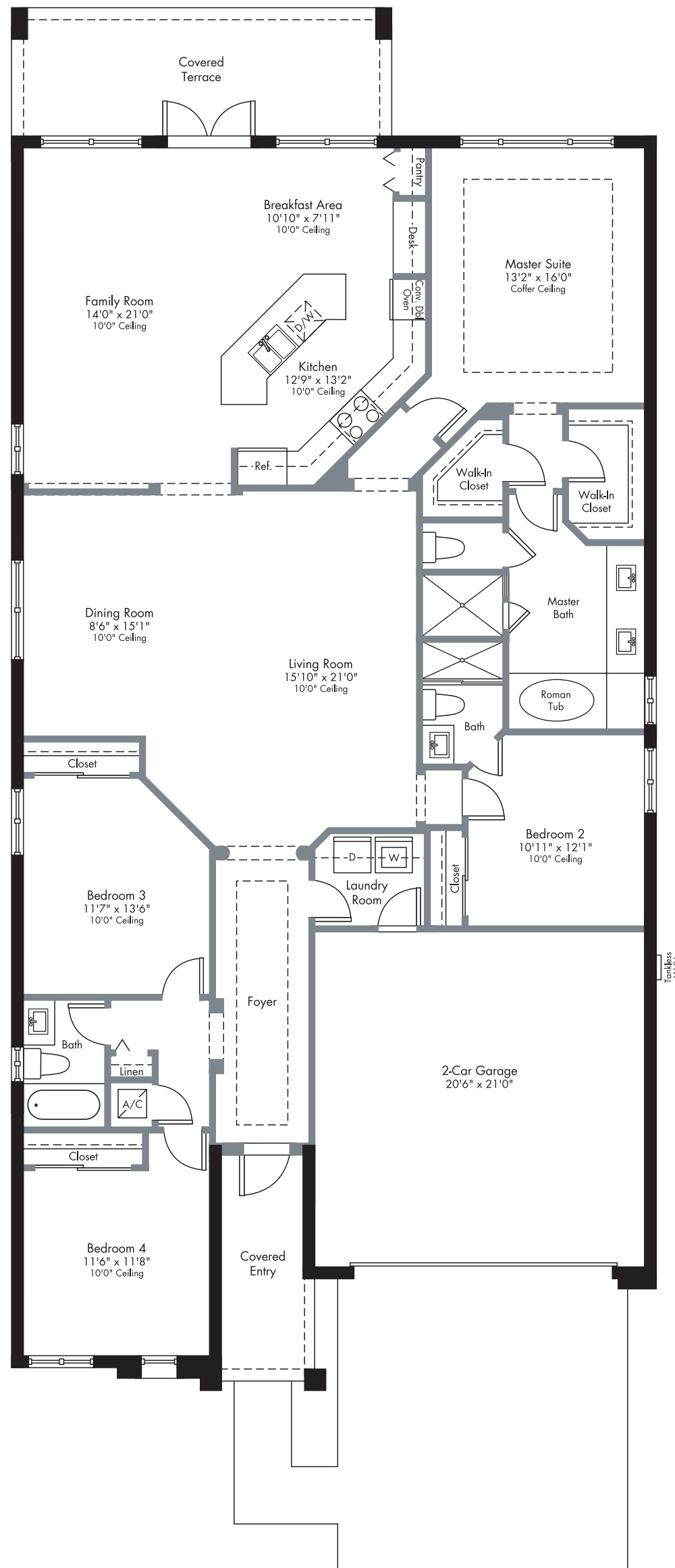
# CASCATA

AT MIRALAGO BY LENNAR

## BONITA

### ESTATE COLLECTION

1 Story | 4 Bedrooms | 3 Baths | Family Room | Breakfast Area | Covered Terrace | 2-Car Garage



2,431 Sq. Ft.	A/C Area
464 Sq. Ft.	2-Car Garage
78 Sq. Ft.	Covered Entry
189 Sq. Ft.	Covered Terrace
3,162 Sq. Ft.	Total

LENNAR





# CASCATA

AT MIRALAGO BY LENNAR

## CARRINGTON

ESTATE COLLECTION



ELEVATION A - STANDARD



ELEVATION B - STANDARD



ELEVATION A1 - OPTIONAL STONE



ELEVATION B1 - OPTIONAL STONE

2 Story | 4 Bedrooms | 4 Baths | Balcony | Family Room | Breakfast Area | Covered Terrace | 2-Car Garage



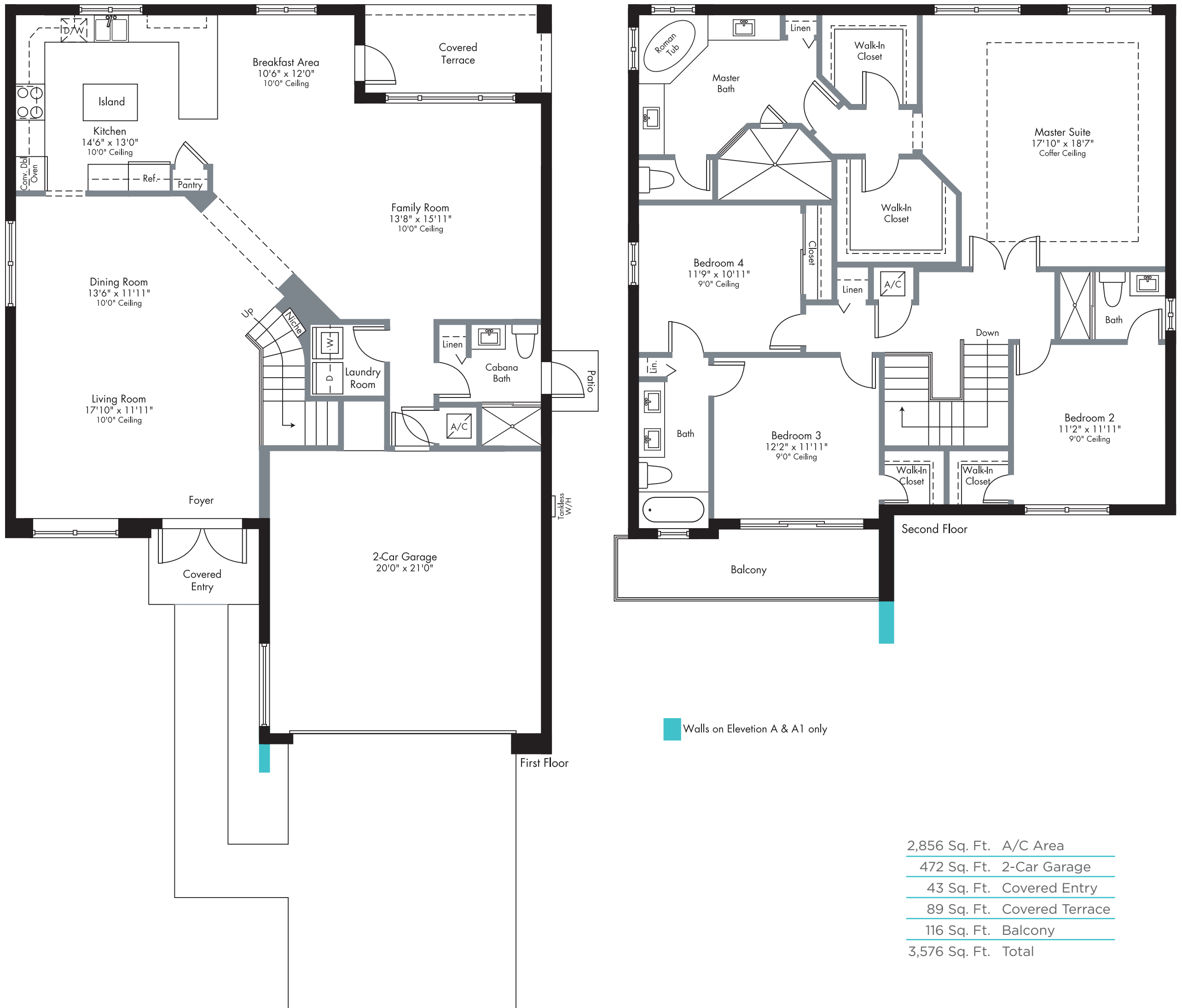
# CASCATA

AT MIRALAGO BY LENNAR

## CARRINGTON

ESTATE COLLECTION

2 Story | 4 Bedrooms | 4 Baths | Balcony | Family Room | Breakfast Area | Covered Terrace | 2-Car Garage



2,856 Sq. Ft.	A/C Area
472 Sq. Ft.	2-Car Garage
43 Sq. Ft.	Covered Entry
89 Sq. Ft.	Covered Terrace
116 Sq. Ft.	Balcony
3,576 Sq. Ft.	Total

LENNAR





# CASCATA

AT MIRALAGO BY LENNAR

## DELLA

ESTATE COLLECTION



ELEVATION A - STANDARD



ELEVATION B - STANDARD



ELEVATION A1 - OPTIONAL STONE



ELEVATION B1 - OPTIONAL STONE

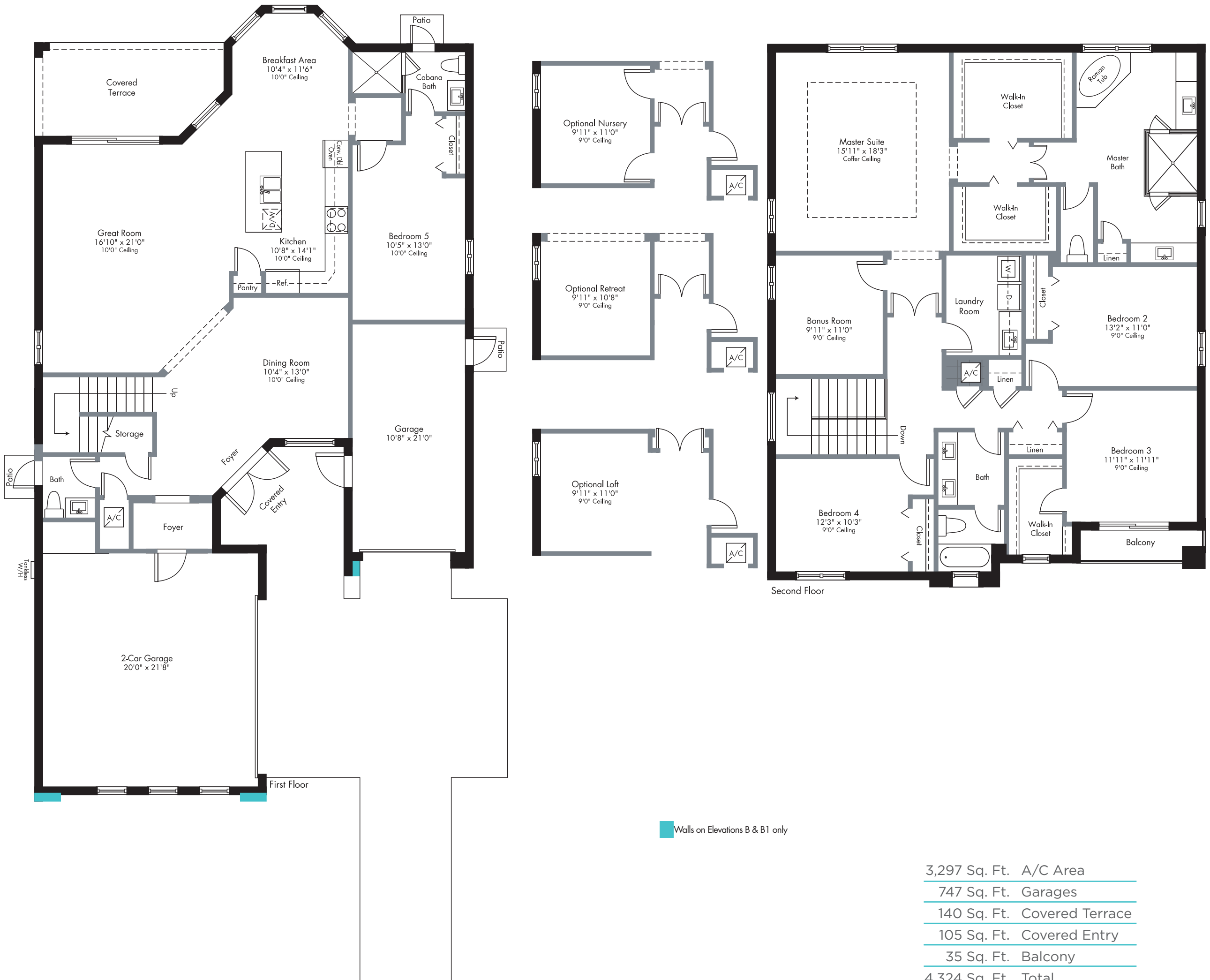
2 Story | 5 Bedrooms | 3.5 Baths | Bonus Room (Optional Layout Available) | Great Room  
Breakfast Area | Covered Terrace | Balcony | 2-Car Garage | 1-Car Garage



## DELLA

### ESTATE COLLECTION

2 Story | 5 Bedrooms | 3.5 Baths | Bonus Room (Optional Layout Available) | Great Room  
Breakfast Area | Covered Terrace | Balcony | 2-Car Garage | 1-Car Garage





# CASCATA

AT MIRALAGO BY LENNAR

## EMERALD ESTATE COLLECTION



ELEVATION A - STANDARD



ELEVATION B - STANDARD



ELEVATION A1 - OPTIONAL STONE



ELEVATION B1 - OPTIONAL STONE

2 Story | 5 Bedrooms | 4 Baths | Balcony | Family Room | Breakfast Area | Covered Terrace | 2-Car Garage







# CASCATA

AT MIRALAGO BY LENNAR

## NILE

THE HOME WITHIN A HOME<sup>®</sup>  
by LENNAR

### ESTATE COLLECTION



**Main Home:** 2 Story | 4 Bedrooms | 2.5 Baths | Bonus Room (Optional Layout Available) | Great Room | Breakfast Area | Covered Terrace | Balcony | 2-Car Garage  
**Private Suite:** Private Entry | Bedroom | Cabana Bath | Living Room | Kitchenette



# CASCATA

AT MIRALAGO BY LENNAR

## NILE ESTATE COLLECTION



**Main Home:** 2 Story | 4 Bedrooms | 2.5 Baths | Bonus Room (Optional Layout Available) | Great Room | Breakfast Area | Covered Terrace | Balcony | 2-Car Garage  
**Private Suite:** Private Entry | Bedroom | Cabana Bath | Living Room | Kitchenette



2,995 Sq. Ft.	A/C Area
555 Sq. Ft.	Private Suite A/C Area
494 Sq. Ft.	2-Car Garage
140 Sq. Ft.	Covered Terrace
105 Sq. Ft.	Covered Entry
35 Sq. Ft.	Balcony
<b>4,324 Sq. Ft.</b>	<b>Total</b>

LENNAR





# CASCATA

AT MIRALAGO BY LENNAR

## PIEDRA

ESTATE COLLECTION



ELEVATION A - STANDARD



ELEVATION B - STANDARD



ELEVATION A1 - OPTIONAL STONE



ELEVATION B1 - OPTIONAL STONE

2 Story | 4 Bedrooms | 4 Baths | Game Room | Balcony | Family Room  
Breakfast Area | Covered Terrace | 3-Car Garage







# CASCATA

AT MIRALAGO BY LENNAR

## SOMMERSET

ESTATE COLLECTION



ELEVATION A - STANDARD



ELEVATION B - STANDARD



ELEVATION A1 - OPTIONAL STONE



ELEVATION B1 - OPTIONAL STONE

2 Story | 5 Bedrooms | 4 Baths | Sitting Area | Game Room | Balcony | Family Room  
Breakfast Area | Covered Terrace | 2-Car Garage







# CASCATA

AT MIRALAGO BY LENNAR

## INCLUDED FEATURES

### COMMUNITY FEATURES

- Cascata will be built and Marketed by Lennar, a Fortune 500 Company listed on the New York Stock Exchange (LEN), one of the Nation's leading Homebuilders since 1954
- Cascata at MiraLago will be an elegant, master planned, access-controlled community, that features two collections of homes: The Estate Collection and the Presidential Collection
- Located in the heart of Parkland, Cascata at MiraLago is located close to top-rated schools, fine dining, shopping, equestrian centers and many beautiful parks
- Cascata residents will enjoy the newly completed Grand Clubhouse facility at MiraLago with state-of-the-art fitness center, children's play room, locker areas with saunas and showers, billiards room, elegant ballroom with caterer's kitchen, resort-style pool and spa, children's water park and much more
- Residents will also enjoy an array of amenities at the soon to be built sports complex with inviting pool and spa, children's playground, waterpark, state-of-the-art fitness center, tennis, basketball and raquetball courts

### EXTERIOR HOME FEATURES

- Elegant contemporary architectural design styles
- Covered front porch and rear covered patio or terrace (per plan)
- All concrete block construction
- Gypsum flooring underlayment (on second floor)
- Flat-Style concrete roof tile
- Impact-resistant windows and sliding glass doors throughout home (per plan)
- Impact rated solid or french glass main entry door (per plan's color scheme)
- Front door chime
- Flat-panel Hurricane Code approved garage door with remotes
- Decorative coach lights or recessed LED downlighting (per elevation)
- Brick paver driveway, entry walks and patio
- Designer exterior paint in choice of decorator palettes
- Elegant landscaping and fully-sodded homesite
- Automatic sprinkler system
- Exterior hose connections

### INTERIOR APPOINTMENTS

- Alarm system
- Dramatic 10' ceilings in main living areas (per plan)
- Coffered ceilings in master suite, dining room, great room and foyer (per plan)
- Central air-conditioning and heating system
- Plush, stain-resistant carpet with upgraded padding in choice of designer colors
- Stylish 20"x 20" porcelain floor tiles in foyer, kitchen, great room, breakfast room, family room, dining room, living room and laundry room in choice of designer colors (per plan)
- Home Automation Package

### INTERIOR APPOINTMENTS CONT.

- Grand 8' raised-panel interior doors with lever-style hardware
- Textured walls and ceilings in all areas excluding bath walls
- Designer quality paint on all walls and ceilings
- Rocker-style light switches throughout
- Generous recessed lighting (locations per plan)
- Contemporary-style baseboards and door casings
- Top-mount painted wood stair rails in two story homes
- Decorative wall sconces in stairwells (per plan)
- Category 5e structured wiring for phone in kitchen only. Family room and all bedrooms wired for internet, home run to central distribution panel
- RG6 shielded coaxial television cable in all bedrooms and family room, home run to central distribution panel
- Pre-wired for ceiling fan in all bedrooms and family room
- Vinyl-clad, ventilated closet shelving
- Decorative marble windowsills throughout
- Tankless gas water heater
- Combined smoke and carbon monoxide detectors throughout
- Decorative niches (per plan)

### DESIGNER KITCHEN

- Deluxe Stainless Steel appliance package featuring:
  - Counter-depth French door refrigerator w/Keurig® K-cup dispenser
  - 36" drop-in gas cooktop
  - 36" Stainless Steel chimney-style hood with outside ventilation
  - Energy-efficient dishwasher
  - Built in 30" combination wall oven w/convection & Adventium® technology
- Built-in 42" upper cabinets in choice of colors and style with soft close hinges and undermount guides (per style)
- Pullout trash & recycling bin
- Elegant quartz or granite countertops with square edge in designer pre-selected color
- Elegant full subway tile backsplash in choice of colors
- Stainless steel single bowl rectangular under-mount sink
- Island prep area (per plan)
- Contemporary-style one-handle pulldown kitchen faucet with pullout sprayer
- Waste disposal system
- Contemporary-style recessed LED downlighting
- Convenient USB port outlet

### GRAND MASTER BATH

- Choice of elegant quartz or granite countertop
- Decorative wide-spread faucets
- Luxurious dual vanities floating off the floor
- Garden soaking tub
- Separate clear-glass enclosed shower
- Shower floor in elegant "pebble" style stone with 12"x 24" tile in shower walls
- Elegant 20"x 20" porcelain tile flooring in choice of colors

### SECONDARY BATHS

- Contemporary white cultured marble tops
- Decorative faucets
- Floating vanities (color to match kitchen cabinets)
- Decorative 20"x 20" porcelain tile flooring (12"x 12" on shower floors)

### INCLUDED IN ALL BATHS

- Full vanity-width mirrors
- Elongated water closet in all baths
- Shampoo niches (per plan)
- Decorative 20"x 20" mirror medicine cabinets (per plan)
- Exhaust fans in all bathrooms

### LAUNDRY FEATURES

- 36" raised-panel, white foil upper cabinets
- Elegant 20"x 20" porcelain tile flooring
- Convenient mica-countertop in white (per plan)
- Extra-large-capacity electric washer
- Extra-large-capacity gas dryer
- Built-in laundry sink (per plan)

### UNIQUE GAS FEATURES

- Tankless gas water heater
- Gas piping to cooktop
- Gas dryer

# NEXTGEN<sup>®</sup>-THE HOME WITHIN A HOME<sup>®</sup>

## INCLUDED FEATURES

NEXTGEN<sup>®</sup>- THE HOME WITHIN A HOME<sup>®</sup>, A NEW CONCEPT IN LIVING SPACE DESIGNED TO COMFORTABLY ACCOMODATE A PRIVATE SUITE ADJACENT TO THE MAIN HOME. THESE NEW, INNOVATIVE FLOORPLANS ALLOW FAMILIES TO LIVE TOGETHER AND STILL HAVE THEIR OWN PRIVATE SPACE.

### EXTERIOR HOME FEATURES

- Impact-resistant glass windows and doors throughout home (per plan)
- Private brick paver entry and patio (per plan)
- Private entry with impact rated main entry door (to match main home)

### PRIVATE SUITE INTERIOR APPOINTMENTS

- Alarm keypad (system controlled from main home)
- Dramatic 10' ceilings in main living areas (per plan)
- Elegant 20"x 20" porcelain tile in private suite living room and kitchenette in choice of decorator colors (to match main home)
- Plush, stain-resistant carpet with upgraded padding in private suite bedroom
- Raised panel interior doors with lever-style interior door hardware
- Raised panel bi-fold closet doors
- Contemporary-style baseboards and door casings
- Textured walls and ceilings in all areas excluding bath walls
- Designer quality paint on all walls and ceilings
- Rocker-style light switches throughout
- Category 5e structured wiring for phone in kitchenette only. Private suite living room and bedroom wired for internet, home run to central distribution panel on main home
- RG6 shielded coaxial television cable in private suite living room and bedroom, home run to central distribution panel on main home

### PRIVATE SUITE INTERIOR APPOINTMENTS CONT.

- Pre-wired for ceiling fan in private suite living room and bedroom
- Decorative marble windowsills throughout
- Combined smoke and carbon monoxide detector (per plan)
- Vinyl-clad ventilated closet shelving in master suite closet (per plan)

### YOUR KITCHENETTE

- Quality Stainless Steel appliance package featuring:
  - Side-by-side refrigerator with ice and water dispenser in door
  - Energy efficient dishwasher
  - Stainless steel rectangular sink
  - Recessed LED downlighting
  - 42" upper cabinetry with soft close hinges and undermount guides (to match main home kitchen) (per style)
  - Elegant quartz or granite countertop with square edge (matching main home kitchen countertop)
  - Elegant full subway tile backsplash (to match main home kitchen)
  - Built-in microwave with recirculating ventilation system
- Contemporary-style recessed LED downlighting

### YOUR PRIVATE BATH

- Contemporary white cultured marble top
- Decorative faucets
- Floating vanities (matching main home kitchen cabinet)
- Clear-glass enclosed shower
- Full vanity-width mirrors
- Elongated water closet
- Elegant 20"x 20" porcelain tile flooring (12"x 12" on shower floor) matching main home
- Decorative mirror medicine cabinets (per plan)
- Exhaust fan
- Shampoo niche (per plan)

### LAUNDRY FEATURES

- Convenient unitized electric washer and dryer
- 20"X20" porcelain tile flooring (matching main home secondary bathroom)
- Vinyl-clad ventilated shelving



THE HOME WITHIN A HOME<sup>®</sup> EVERYTHING'S  
by LENNAR<sup>®</sup> INCLUDED<sup>®</sup>



The specific features, amenities, floor plans, elevations, square footage, and designs vary per plan and community and are subject to changes or substitution without notice. We reserve the right to substitute equipment, material, appliances and brand names with items of equal or higher, in our sole opinion, value. Color and size variations may occur. The prices of our homes, included features, and available locations are subject to change without notice. Please see the actual home purchase agreement for additional information, disclosures and disclaimers relating to the home and its features. Void where prohibited by law. Proposed amenities for the community are subject to changes, substitutions and/or deletions without notice. Lennar makes no representation or guarantee that the community or any amenities will be built out as currently planned. Copyright © 2017 Lennar Corporation. Lennar, the Lennar logo, and the Everything's Included logo are registered service marks of Lennar Corporation and/or its subsidiaries. CGC - 082343. 09/17



LENNAR

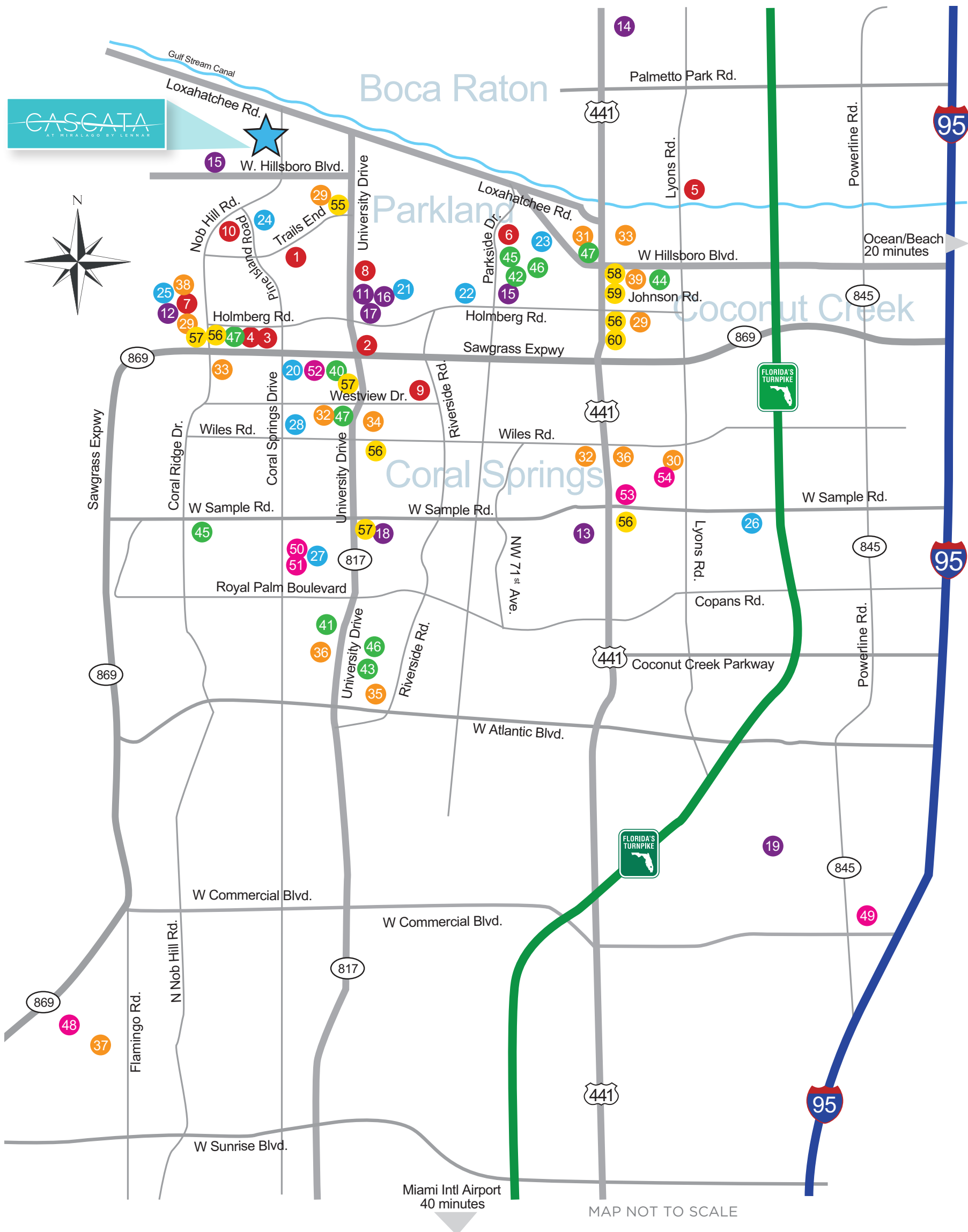


# CASCATA

AT MIRALAGO BY LENNAR

## POINTS OF INTEREST

### PARKLAND NEARBY AMENITIES



#### SCHOOLS

1. Park Trails Elementary School
2. Mary Help of Christian Catholic School
3. Stoneman Douglas High School
4. Westglades Middle School
5. North Broward Preparatory School
6. Riverglades Elementary School
7. Cambridge School
8. Congregation Koi Tikvah and School
9. Coral Park Elementary School
10. Heron Heights Elementary School

#### HOSPITALS/MEDICAL/GOVERNMENT

11. Parkland City Hall and Government Center
12. MD Now Urgent Center
13. Northwest Regional Hospital
14. W. Boca Medical Center
15. Parkland Fire Department
16. Broward Sheriff's Office (Parkland)
17. Parkland Library
18. N.W. Regional Library
19. Ft. Lauderdale Executive Airport

#### RECREATION AND OUTDOOR

20. North Community Park
21. Liberty Park
22. The Equestrian Center at Temple Park
23. Terramar Park
24. Pine Trails Park and Amphitheater
25. Heron Bay Golf & Country Club
26. Tradewinds Park
27. Mullins Park
28. Beth Strading Memorial and Skate Park

#### SHOPPING

29. Publix
30. Promenade at Coconut Creek
31. BJ's Wholesale Club
32. Target
33. Walmart Super Center
34. The Fresh Market
35. Coral Springs Mall
36. Home Depot
37. Sawgrass Mills Mall
38. The Shops at Heron Lakes
39. Kohl's

#### RESTAURANTS

40. Anthony's Coal Fired Pizza
41. Big Bear Brewing
42. Blue Fin Fish & Thai Grill
43. Bonefish Grill
44. Bru's Room Sports Grill
45. Pizza Time
46. Benihana
47. Starbucks

#### ENTERTAINMENT

48. BB&T Center
49. Xtreme Action Park
50. Coral Springs Center for the Arts
51. Coral Springs Museum of Art
52. Regal Magnolia 16 Theaters
53. Seminole Casino
54. Silver Spot Theater

#### BANKS

55. Mercantil Commerce Bank
56. Bank of America
57. Wells Fargo Bank
58. PNC Bank
59. TD Bank
60. Chase Bank

MAP NOT TO SCALE

Maps are conceptual in nature and merely an artist's rendition. These maps are solely for illustrative purposes and should never be relied upon. NOTICE TO PARENTS OF SCHOOL AGE CHILDREN: school age children may not be assigned to the public school closest to their residences. School Board policies regarding levels of service or other boundary policy decisions affect school boundaries. Please contact the Broward County Schools' Demographics & Student Assignments Department at (754) 321-2480 for the service for the most current assignment(s). We reserve the right to make changes at any time without notice. CGC - 062343, 09/17



# CASCATA

BY LENNAR

LENNAR®

ORAL REPRESENTATIONS CANNOT BE RELIED UPON AS CORRECTLY STATING REPRESENTATIONS OF THE DEVELOPER. FOR CORRECT REPRESENTATIONS, MAKE REFERENCE TO THIS BROCHURE AND TO THE DOCUMENTS REQUIRED BY SECTION 718.503, FLORIDA STATUTES, TO BE FURNISHED BY A DEVELOPER TO A BUYER OR LESSEE. Plans and elevations are artist's renderings and may not accurately represent the actual condition of a home as constructed, and may contain options which are not standard on all models. Lennar reserves the right to make changes to these floor plans, specifications, dimensions and elevations without prior notice. Stated dimensions and square footage are approximate and should not be used as representation of the home's precise or actual size. Any statement, verbal or written, regarding "under air" or "finished area" or any other description or modifier of the square footage size of any home is a shorthand description of the manner in which the square footage was estimated and should not be construed to indicate certainty. See a Lennar new home consultant for further information. Garage sizes may vary from home to home and may not accommodate all vehicles. Void Where Prohibited By Law. Copyright © 2017 Lennar Corporation. Lennar and the Lennar logo are registered service marks or service marks of Lennar Corporation and/or its subsidiaries. CGC 062343, 09/17

