

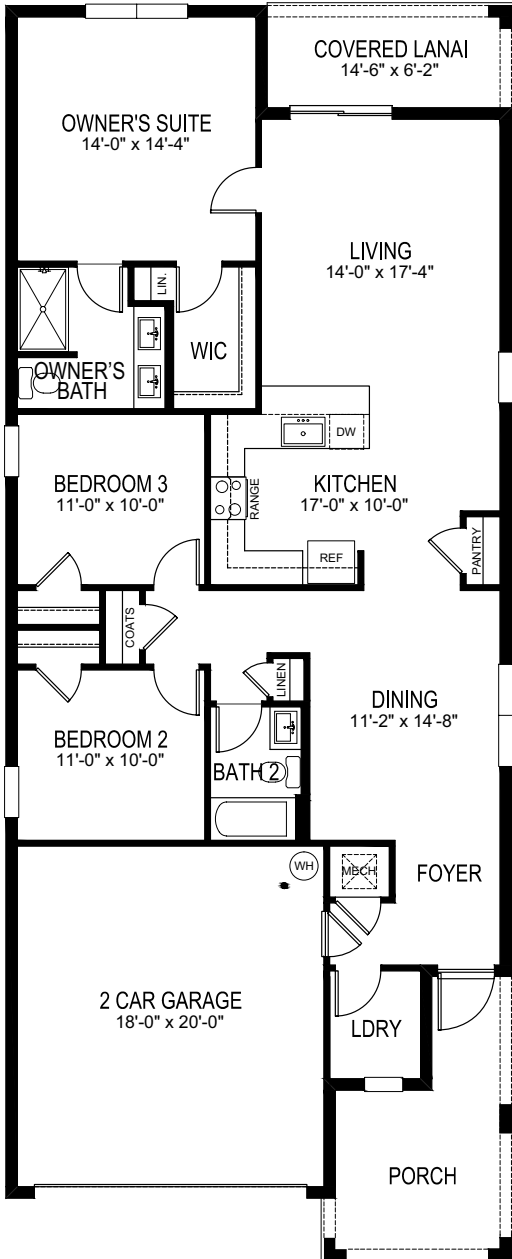
NEW SINGLE-FAMILY HOMES



D.R. Horton is equal housing opportunity builder. Home and community information, including pricing, included features, terms, availability and amenities, are subject to change and prior sale at any time without notice or obligation. Pictures, photographs, features, colors and sizes are approximate for illustration purposes only and will vary from the homes as built. Florida Certified General Contractor #CGC059394

ALLEX

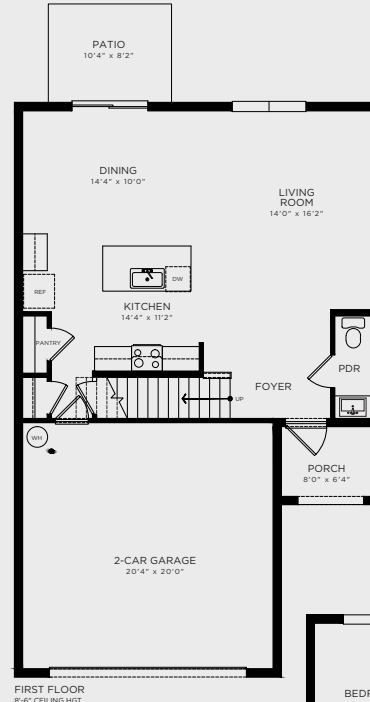
3 Bedrooms, 2 Bathrooms, 2-Car Garage



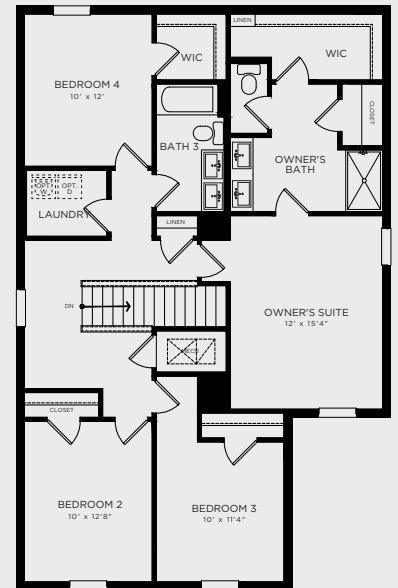
Total A/C Sq. Ft.	1,504
Covered Porch	31
Covered Lanai.....	86
2-Car Garage.....	390
Total Sq. Ft.	2,011

AISLE

4 Bedrooms, 2.5 Bathrooms, 2-Car Garage



FIRST FLOOR
8'-6" CEILING HGT.

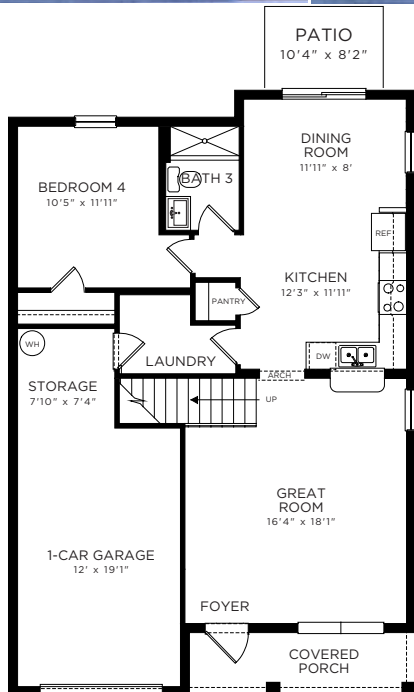


SECOND FLOOR
8'-8" CEILING HGT.

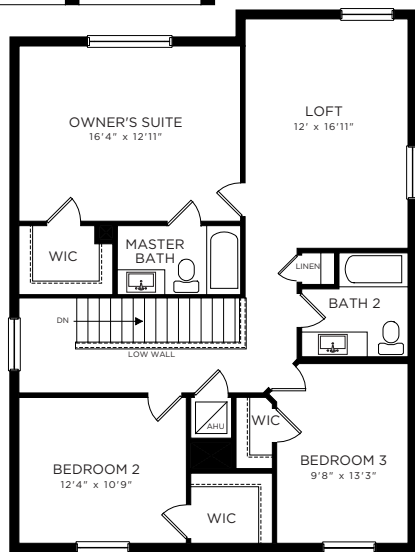
1st Floor A/C Sq. Ft.	774
2nd Floor A/C Sq. Ft.	1,272
Total A/C Sq. Ft.	2,046
Covered Porch.....	51
2-Car Garage.....	448
Total Sq. Ft.	2,545

SAPOLE

4 Bedrooms, 3 Bathrooms, Loft, 1-Car Garage



FIRST FLOOR
8'6" CEILING HGT.

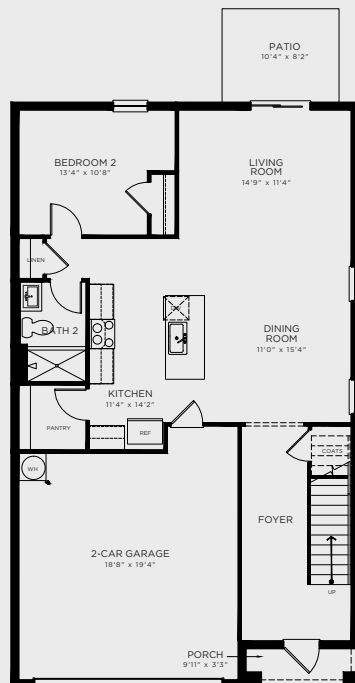


SECOND FLOOR
8'8" CEILING HGT.

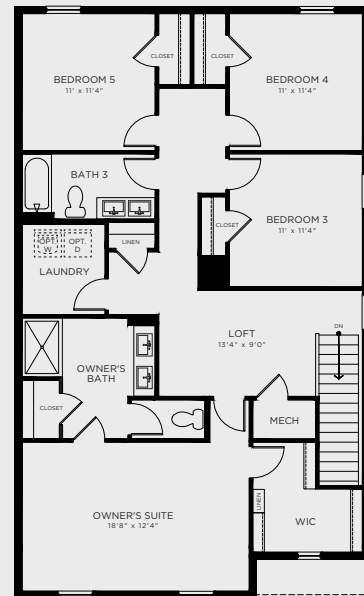
1st Floor A/C Sq. Ft.918
 2nd Floor A/C Sq. Ft. 1,167
Total A/C Sq. Ft.2,085
 Covered Porch 78
 Garage 311
Total Sq. Ft.2,474

ROBIE

5 Bedrooms, 3 Bathrooms, Loft, 2-Car Garage



FIRST FLOOR
8'4" CEILING HGT.



SECOND FLOOR
9'8" CEILING HGT.

1st Floor A/C Sq. Ft.1048
 2nd Floor A/C Sq. Ft. 1451
Total A/C Sq. Ft. 2,499
 Covered Porch 32
 2-Car Garage 403
Total Sq. Ft.2,934

Baywood | Included Features

Architectural Artistry

- Reinforced concrete monolithic foundation slab
- Masonry exterior walls
- Professionally engineered roof with hurricane clips and bracing
- IKO® dimensional roof shingles with 30 year manufacturers warranty
- Architecturally designed exterior elevations with each floor plan
- Fully sodded homesites with professionally designed landscaping
- Hunter® automatic irrigation system
- Paver driveway, entry walkway, and patio or lanai
- Durable metal garage door
- Therma Tru® embossed insulated fiberglass front door
- Hurricane storm panels
- Exterior weather proof outlets (G.F.I.)
- Exterior hose bib connection

Heart of the Home

- Knockdown textured finish on walls and ceilings
- Jeld-Wen® 2-panel interior doors
- Kwikset® satin nickel keyed entry handleset
- Kwikset® satin nickel interior door levers throughout
- Vinyl-coated ventilated shelving in all closets
- Daltile® 18" x 18" ceramic tile flooring in all first floor living areas (excluding bedrooms)
- Mohawk® luxurious wall-to-wall carpeting (installed over dense padding)
- Sherwin Williams® bright white interior paint
- Square style baseboards throughout

A Gourmet's Delight

- Whirlpool® Stainless Steel Appliances:
 - 24 Cu. Ft. side x side refrigerator with ice maker
 - Glass top range with microwave above
 - Built-in dishwasher
- Moen® single lever faucet
- Sterling single bowl stainless steel sink in kitchen
- Quality crafted custom designed cabinets with 36" uppers

Thoughtful Details

- Uponor PEX® plumbing water lines
- Minimum 50 gallon insulated water heater (per plan)
- Interior washer/dryer hook-up
- R-30 blown insulation above all air-conditioned living space
- R-11 BATT insulation between interior wall and garage wall
- R-4.1 insulated exterior masonry walls
- Carrier® energy efficient central A/C and heating system

Bathroom Conveniences

- All baths with adult-height custom designed wood cabinets
- Daltile® 12" x 12" ceramic tile floors in all baths
- Full vanity mirrors in all baths
- Framed glass shower enclosure (per plan)
- Gerber® elongated commodes throughout
- Gerber® pedestal sink in powder room (per plan)
- Cultured marble vanity countertops
- Moen® bathroom faucets throughout
- Air King® exhaust fans in all bathrooms

Technology Standard Features

- Square D® surge protection on all major appliances
- Pre-wired for ceiling fans with switches in all bedrooms and great room
- High speed structured wiring for 4-line phone, video and computer Includes CAT-5 data lines and RG-6 quad shield coaxial cable (per plan)
- BRK® electrical smoke detectors with battery back-up
- BRK® carbon monoxide detector
- Cooper® switches and outlets throughout
- Minimum 150-amp electrical panel with circuit breakers

Home Is® Connected

- Qolysys IQ Panel II 7" HD Touchscreen with built-in 5MP camera
- Skybell® Trim Plus WiFi video doorbell
- Echo Dot™ speaker with Alexa
- Z Wave™ Thermostat
- Z Wave™ Light Switch
- Z Wave™ Door Lock
- WiFi enabled garage door opener with two transmitters
- Security System with 1 motion detector and 3 door contacts

D.R. Horton's Personal Touch

- Personalized New Homeowner Orientation
- D.R. Horton 1-Year Warranty
- 10-Year RWCT™ warranty to protect your investment
- 10-Year Carrier® limited warranty
- 3rd party home inspections



D.R. Horton is equal housing opportunity builder. Included features subject to change without prior notice or obligation, as a result, please consult with one of our sales representatives for the latest community information. This map is a schematic for exhibition purposes only and does not represent the exact location or configuration of site features, lot lines, easements, amenities, units, buildings or details shown thereon. All homesite sizes are approximate and may vary. All information on this map, including availability and delivery dates is subject to change without notice or obligation. Florida Certified General Contractor #CGC059394